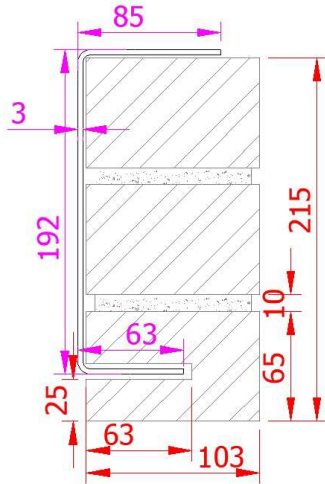


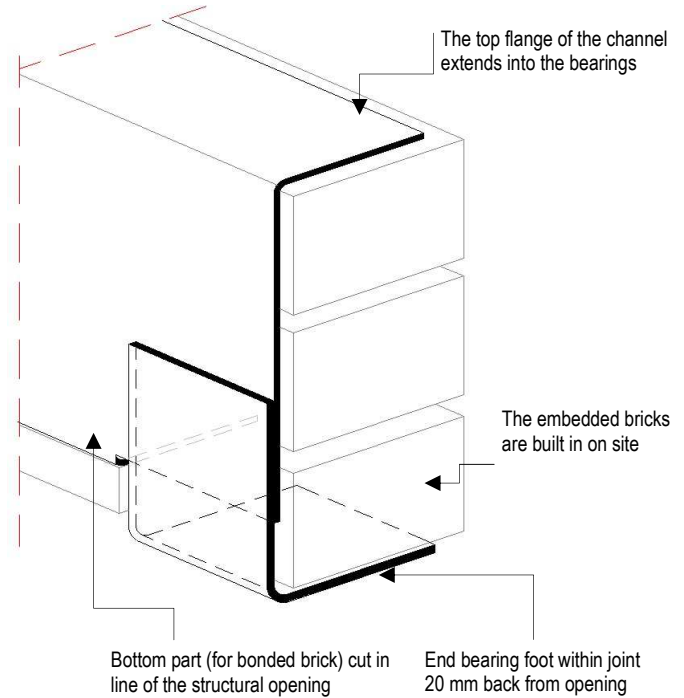
# Brick tray

## CC section range Stretcher bond 65 x 103 mm

Section at span:



Section at bearing:



### CC 65-103

Lintel section properties

I <sub>xx</sub>	535.4	cm <sup>4</sup>
Z <sub>xx</sub>	65.7	cm <sup>3</sup>
Weight	7.9	Kg/m
Area	9.8	cm <sup>2</sup>
R <sub>yy</sub>	7.4	cm

### Lintel load Capacity Table

Opening Span	Lintel Length	Safe Load kN
600	900	31.0
750	1050	31.0
900	1200	31.0
1050	1350	31.0
1200	1500	31.0
1350	1650	31.0
1500	1800	31.0
1650	1950	28.8
1800	2100	26.5
1950	2250	24.5
2100	2400	22.5
2250	2550	21.4
2400	2700	20.0
2550	2850	18.0
2700	3000	16.8
2850	3150	15.9
3000	3300	14.0

This section uses a CS or CM lintel with the brick slotted to produce the fairfaced soffit. The section allows for the brick to be mechanically fixed and bonded.

The section provides a bearing on the bottom flange with second bearing at the "foot".  
 Default material stainless steel SS370 (EN 1.4003) also available in stainless steel LDX2101 (EN 1.4162) or S250GD + Z600.  
 The safe working load SWL represent the maximum factored load uniform distributed load the lintel can carry. 102.5 mm width brickwork is taken as 2.2 ken/m<sup>2</sup>.  
**Bearings;** min 150mm each side, for high loads longer bearings may be needed, and bearing stresses should be checked